

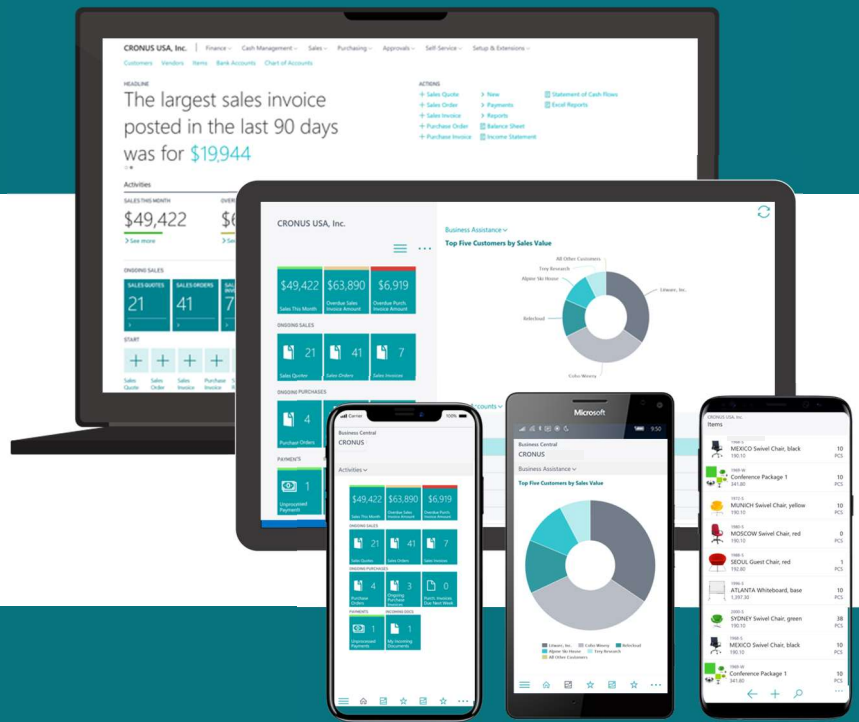
User Manual

Fixed Asset Depreciation Forecast

Version: Microsoft Dynamics 365 Business Central 16



Chase Software
Agency Management Systems



Chase Software

10 Morris Street West, Rivonia, 2180

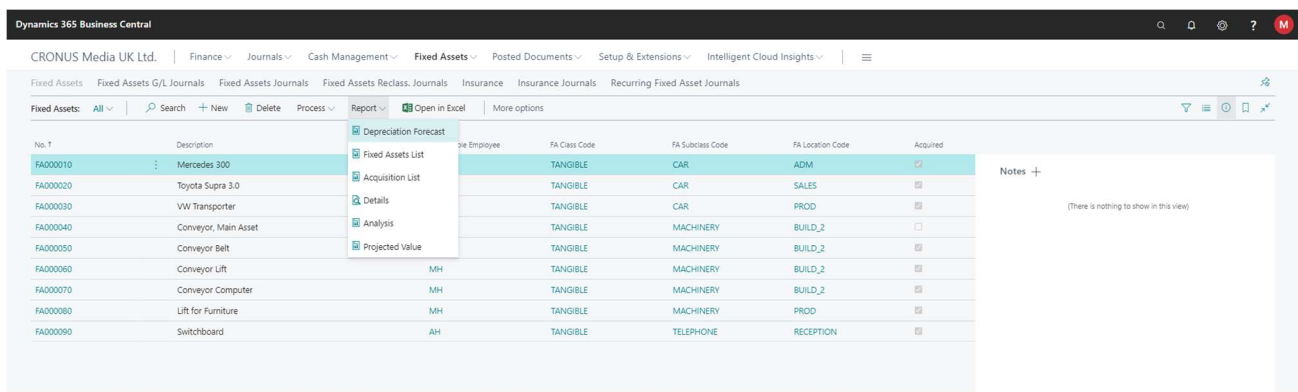
T: + 27 86 112 4273 www.chasesoftware.biz

Fixed Asset Depreciation Forecast – User Manual

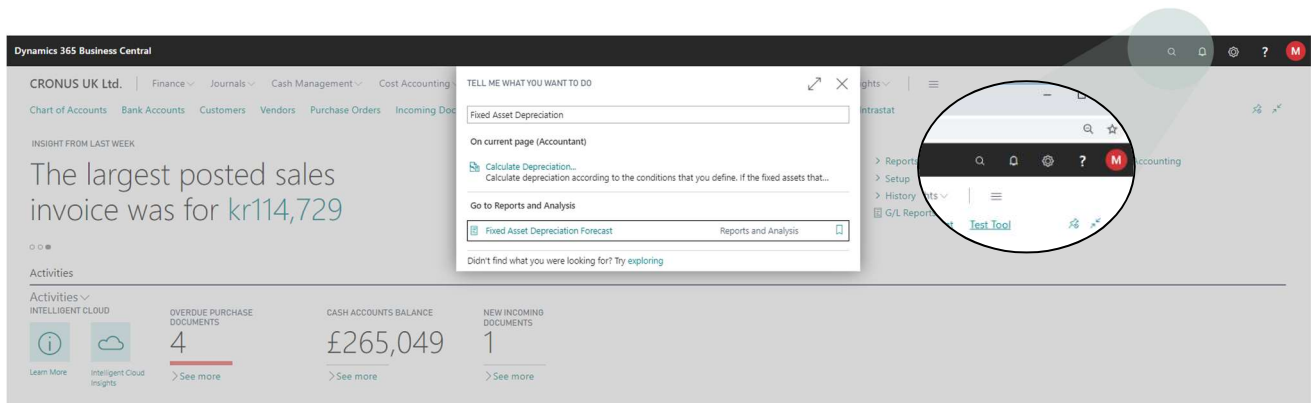
Subscribe in 3 easy steps then manage your subscriptions and make use of this powerful report to save time and money.

Step 1: Launch the report

To launch the Fixed Asset Depreciation Forecast report, navigate to the Fixed Asset List page, then click on the Report menu and select the *Depreciation Forecast* item from the list of reports.



You can also launch the report using the Business Central search feature, as shown below, and navigating to the report directly from the search results.



Step 2: Subscribe to a 7-day free trial

When running the report for the very first time, a confirmation dialog is displayed to confirm the activation of the 7-day free trial and you will need to accept this confirmation to register for the trial before you will be able to run the report.

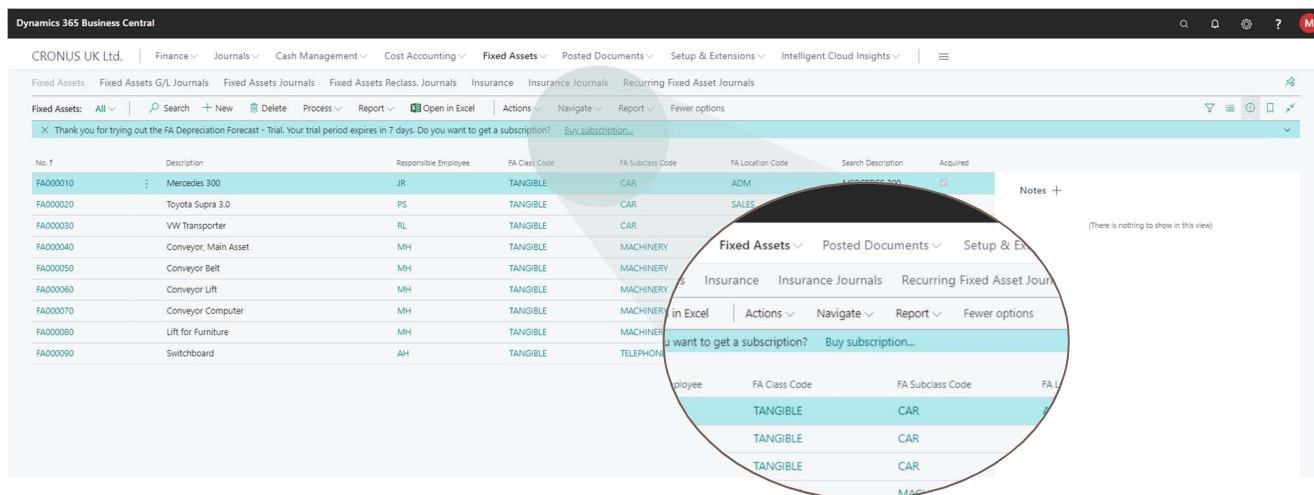
The trial subscription is a risk-free, obligation-free, anonymous request for a license to run the report for a period of 7 days. No credit card details or contact information is requested to activate the trial subscription. There are no penalties and no auto-activation that may result in financial risk to you or your company.

Once the trial subscription has been activated, you are free to use the report for a period of 7 days without any limitations on features.

Step 3: Purchase a premium subscription

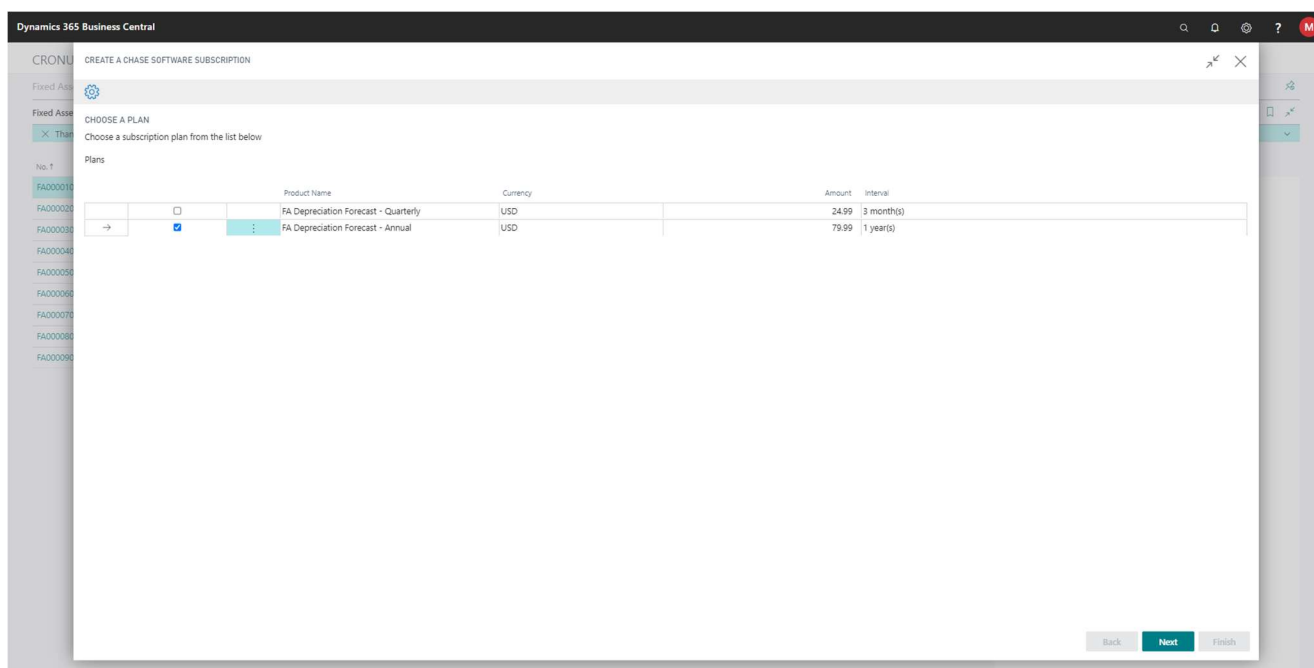
You can buy a subscription to continue using the feature after the trial has expired at any point in time during the trial period or after the trial has expired.

A Business Central notification will be displayed when running the report without a premium license and the **Buy subscription** action can be found in this notification as shown in the image below:



When clicking on the **Buy subscription** action, the Subscription Assistant will guide you through the process of completing the purchase.

From the list of available plans, select a plan that suits your needs and click on the Next button as shown below:



Complete the mandatory fields from the Customer Details page as shown below, then click on the Next button. The mandatory fields are indicated with a red asterisk.

CRONUS CREATE A CHASE SOFTWARE SUBSCRIPTION

Fixed Asset CUSTOMER DETAILS

Provide your company details

Name CRONUS UK, Ltd.

Address 7122 South Ashford Street

Postal Code W2 BHG

City London

State

Country GB

Phone

Email *john@thecannongroup.com

Back Next Finish

This page is where you need to enter your card information. Complete the credit card number, expiry date and CVC fields and then click on the Next button to continue.

Your card information will not be stored in Business Central, instead, it will be securely transferred to our online payment processing partner [Stripe](#).



Stripe is a leader in online payment processing and supports various credit and debit cards.

CRONUS CREATE A CHASE SOFTWARE SUBSCRIPTION

Fixed Asset CREDIT CARD DETAILS

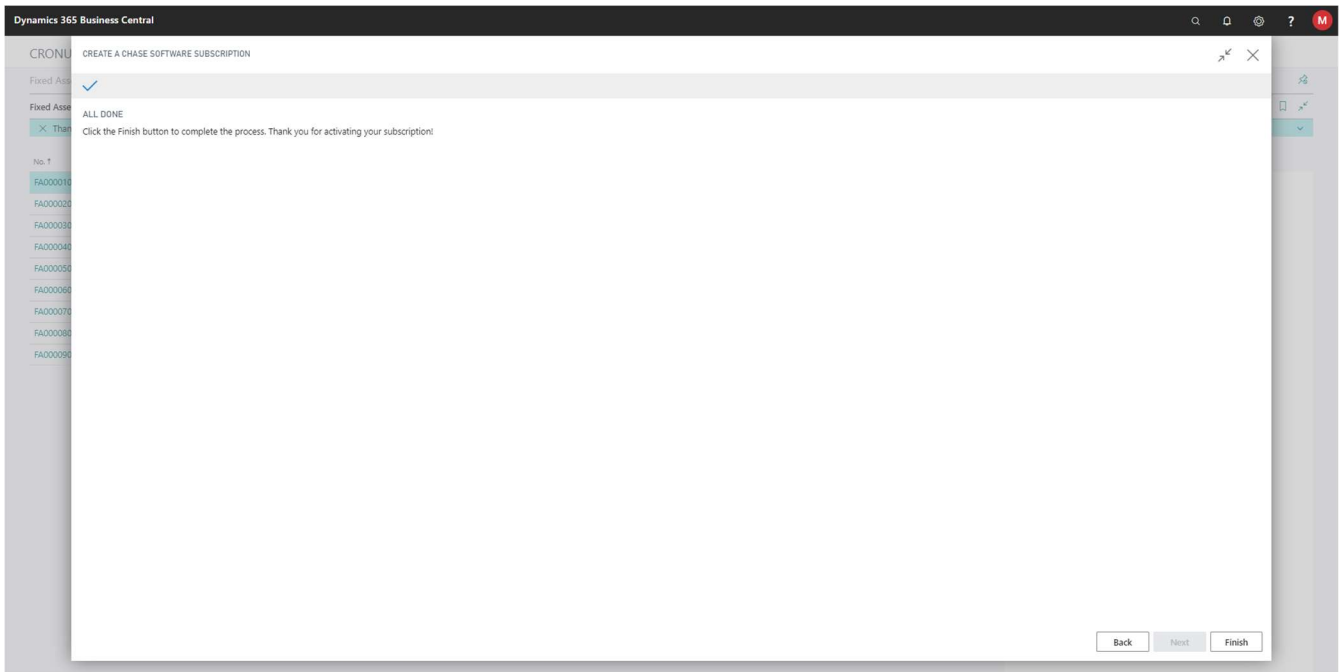
Please fill in your credit card details below. They will be safely stored with our payment provider Stripe. No credit card information will be stored in Microsoft Dynamics 365.

Card number Exp / Yr CVC

Back Next Finish

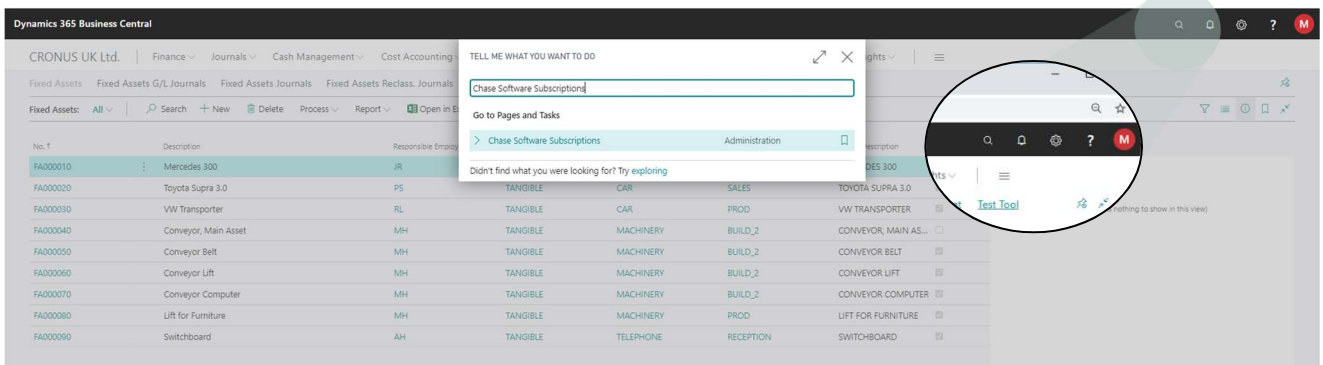
Waiting for q.stripe.com...

To complete the process, click on the Finish button from the page shown below.

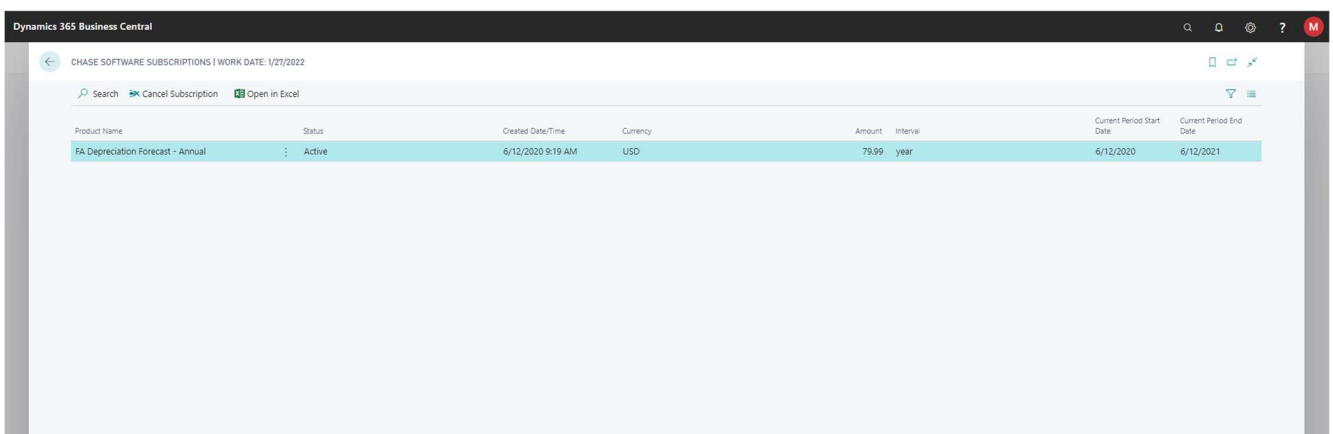


Viewing and managing your subscriptions

You can view and manage your subscriptions from the Chase Software Subscriptions page. Locate the page using the Business Central search feature, as shown below, and navigate to the page directly from the search results.



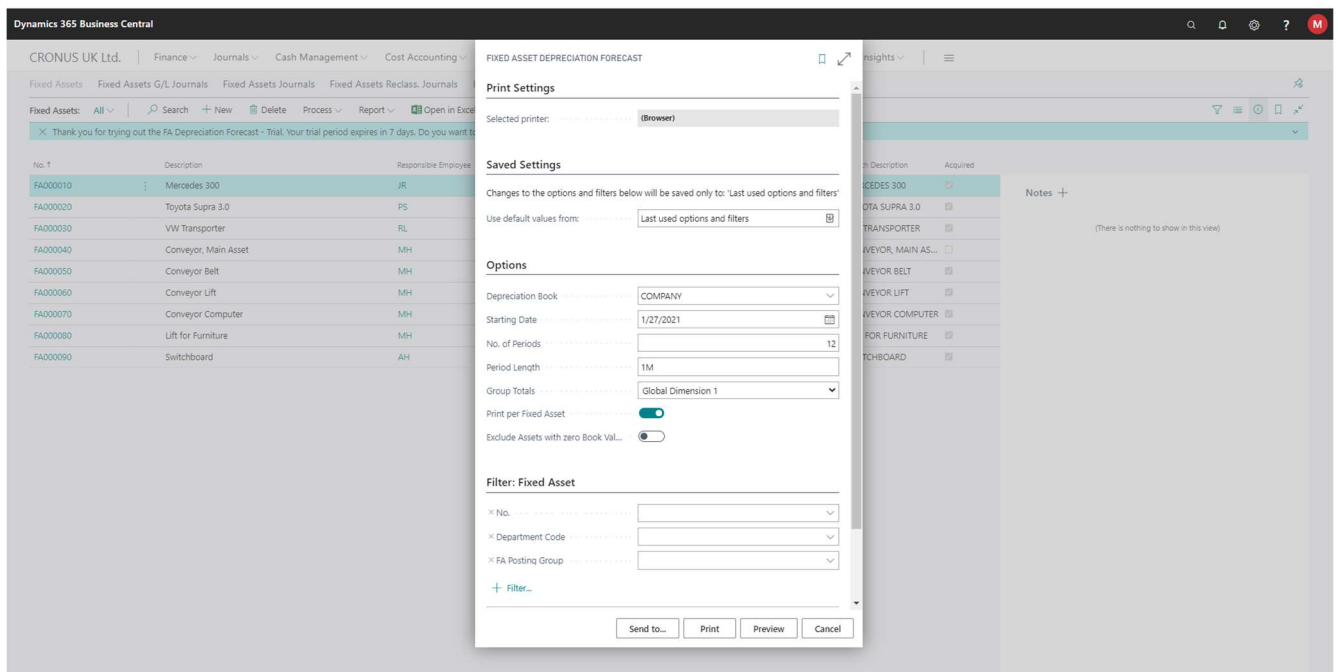
The Chase Software Subscriptions page will list all your subscriptions and you have an option to cancel any of your active subscriptions using the *Cancel Subscription* action as shown below:



Using the Fixed Asset Depreciation Forecast Report

The report offers the following options:

1. Depreciation Book
Select the Depreciation book to be included in the report from the dropdown list.
2. Starting Date
Specifies the date when you want the report to start.
3. No. of Periods
Specifies the number of periods to be included in the report. The minimum value is one and the maximum value is 24.
4. Period Length
This field is used to specify the length of each period to be displayed on the report, for example use the value 1M to indicate a period length of one month.
5. Group Totals
Use this field to specify if you want the report to group fixed assets and print totals using the selected category.
6. Print per Fixed Asset
Specifies if you want the report to print information separately for each fixed asset.
7. Exclude Assets with zero Book Value
Specifies if you want fixed assets with a zero book value to be excluded from the report.



Make use of the Filter section if you want to run the report for a selected range of fixed assets.

The report design supports standard Dynamics 365 Business Central report capabilities such as exporting the result to PDF, Word, Excel, Schedule or making use of the Print Preview or Print features.

Dynamics 365 Business Central
6/12/2020 11:28 AM
Page 1 of 1
MICROSOFTACCOUNTWIECHARDT@OUTLOOK.COM

Fixed Asset Depreciation Forecast

Depreciation Book: COMPANY
CRONUS UK Ltd.
Fixed Asset: FA Postline Date Filter: 02/01/21.
Group Totals: FA Posting Group

No.	Description	Book Value as at 02/01/21	Depreciation Forecast												Book Value as at 01/31/22
			From Date	02/01/21	03/01/21	04/01/21	05/01/21	06/01/21	07/01/21	08/01/21	09/01/21	10/01/21	11/01/21	12/01/21	
CAR															
FA000101	Mercedes 300	29,500.00	-500.00	-500.00	-500.00	-500.00	-500.00	-500.00	-500.00	-500.00	-500.00	-500.00	-500.00	-500.00	28,500.00
FA000210	Toyota Supra 3.0	0.00	0.00	0.00	0.00	-700.00	-700.00	-700.00	-700.00	-700.00	-700.00	-700.00	-700.00	-700.00	35,700.00
FA000230	VW Transporter	0.00	0.00	0.00	0.00	0.00	-250.00	-250.00	-250.00	-250.00	-250.00	-250.00	-250.00	-250.00	13,000.00
Group Total: CAR		29,500.00	-500.00	-500.00	-500.00	-1,200.00	-1,450.00	-1,450.00	-1,450.00	-1,450.00	-1,450.00	-1,450.00	-1,450.00	-1,450.00	72,200.00
MACHINERY															
FA000305	Conveyor Belt	6,545.00	-55.00	-55.00	-55.00	-55.00	-55.00	-55.00	-55.00	-55.00	-55.00	-55.00	-55.00	-55.00	5,885.00
FA000600	Conveyor Lift	0.00	-47.00	-47.00	-47.00	-47.00	-47.00	-47.00	-47.00	-47.00	-47.00	-47.00	-47.00	-47.00	3,848.00
FA000700	Conveyor Computer	0.00	0.00	-63.00	-63.00	-63.00	-63.00	-63.00	-63.00	-63.00	-63.00	-63.00	-63.00	-63.00	2,331.00
FA000800	Lift for Furniture	0.00	0.00	0.00	-40.00	-40.00	-40.00	-40.00	-40.00	-40.00	-40.00	-40.00	-40.00	-40.00	3,440.00
Group Total: MACHINERY		6,545.00	-102.00	-165.00	-205.00	-205.00	-205.00	-205.00	-205.00	-205.00	-205.00	-205.00	-205.00	-205.00	15,604.00
TELEPHONE															
FA000900	Switchboard	0.00	-85.00	-85.00	-85.00	-85.00	-85.00	-85.00	-85.00	-85.00	-85.00	-85.00	-85.00	-85.00	6,120.00
Group Total: TELEPHONE		0.00	-85.00	-85.00	-85.00	-85.00	-85.00	-85.00	-85.00	-85.00	-85.00	-85.00	-85.00	-85.00	6,120.00
Total		36,045.00	-687.00	-750.00	-790.00	-1,490.00	-1,740.00	-1,740.00	-1,740.00	-1,740.00	-1,740.00	-1,740.00	-1,740.00	-1,740.00	93,924.00

< 1/1 >
-
+
📄
🔍
🖨️
📥
📤